

MPM 1D

Linear Relationships Review

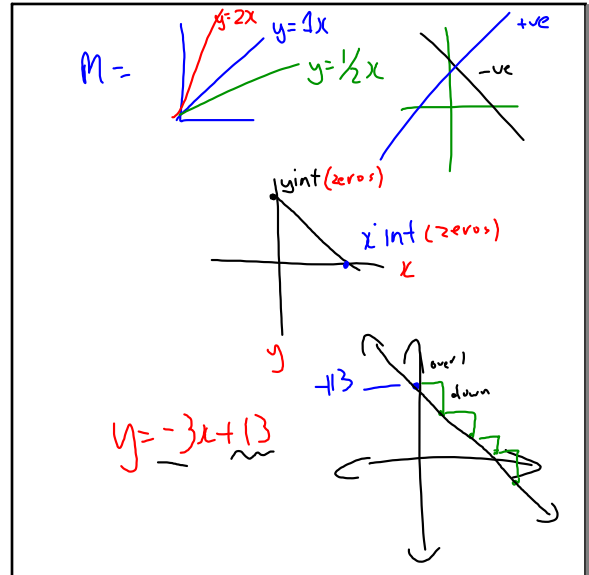
Key Topics  
?????

①  $y = mx + b$   
graphing m/y int method  
M - calc  $\frac{y_2 - y_1}{x_2 - x_1}$

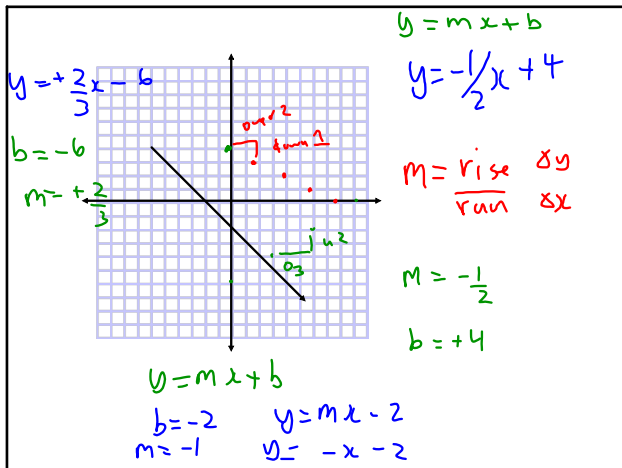
Line of Best Fit  
(interpolating/extrapolating)

$Ax + By + C = 0$  Standard Form  
A = +ve Two Variable Form  
 $ax + by = c$  x & y intercepts (zeros)  
Intersection Pt  
- Break Even (Cost/Rev)  
- Cost Comparison

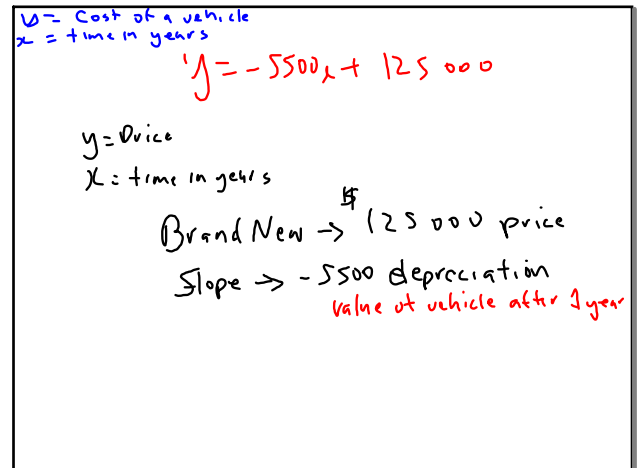
Jun 9-8:15 AM



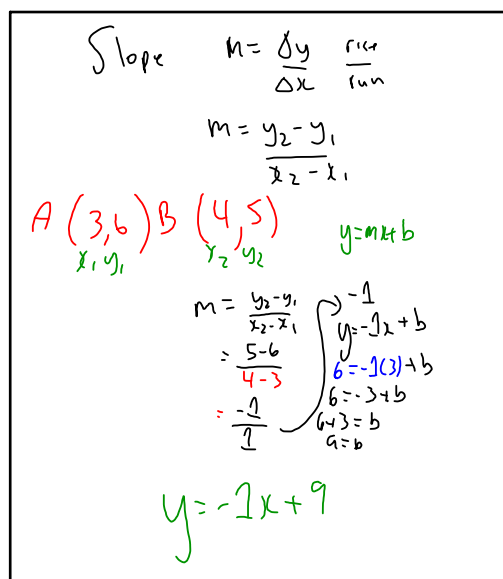
Jun 9-1:30 PM



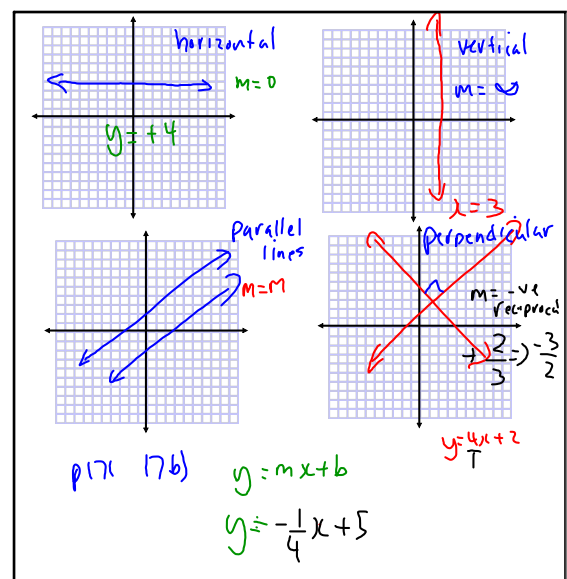
Jun 9-1:36 PM



Jun 9-1:39 PM



Jun 9-1:45 PM



Jun 9-1:50 PM

Conditions of Linear Relationships

First Differences

x	y	$\Delta y$
1	2	
2	4	4-2 = 2
3	6	6-4 = 2
4	8	8-6 = 2

Linear

Jun 9-1:58 PM

Finding the P+ of Intersection

$$y_1 = -2x + 3 \quad y_2 = -\frac{3}{2}x + 3$$

$$y_1 = y_2$$

$$2(-2x + 3) = \left(-\frac{3}{2}x + 3\right) 2$$

$$-4x + 6 = -\frac{3}{2}x + 6$$

$$-4x + 6 = -3x + 6$$

$$-4x + 6 + 4x = -3x + 4x + 6$$

$$6 = 1x + 6$$

$$6 - 6 = 1x + 6 - 6$$

$$0 = 1x$$

$$0 = x$$

Point Int (0,3)

Check  $y = -\frac{3}{2}x + 3$

$$3 = -\frac{3}{2}(0) + 3$$

$$3 = 0 + 3$$

$$3 = 3$$

$$3 = 3$$

Jun 9-2:02 PM

MpM 1D

Linear Relationships Review  
Take Up q 14 Exam Review Sheet

Key Topics  
?????

p167-176  
q. 8-24

Assign Chapter Review Test

Find Eqao questions you struggle with  
20min/night

Jun 9-8:15 AM